



A Project Delivery Firm

ECM, A JMT Division, is a Project and Construction Management firm serving Texas and New Mexico.

4101 - 4120
4201 - 4220
4301 - 4320

HOUSING

ecmintl.com | jmt.com

Blue Flame High-Rise Building
Housing Opportunity Management Enterprise
Photo Credit - Eddie Polar



About the Company

ECM, a JMT Division, is a professional engineering firm, providing project and construction management services throughout Texas since 1983. We have successfully managed projects for federal, state, and local government agencies and private institutions valued at more than \$12 billion.

ECM's professionals include licensed engineers, registered architects, Project Management Professionals of the Project Management Institute (PMI), Certified Construction Managers of the Construction Management Association of America (CMAA), LEED-accredited professionals, field inspectors, project control specialists, schedulers, and cost estimators.

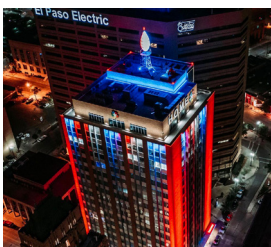
With our parent company, Johnson, Mirmiran, & Thompson (JMT), we can provide a wealth of in-house expertise, services, and leadership for a variety of sectors.

JMT, a licensed Texas firm, is ranked by ENR as #59 in their Top 500 Design Firms and is a multi-disciplined engineering and architectural firm that offers a full array of design and construction services to clients throughout the United States. JMT's client base consists of federal, state, and local government agencies, as well as private, commercial, and industrial institutions.

As an agent of the owner, JMT anticipates potential problems and develops solutions before a project is adversely affected, allowing the owner to maintain schedule, cost, and quality. JMT offers reliable and responsive staff to meet your needs with more than 2,000 employees and forty offices nationwide, with eight offices in Texas.

We bring value to our clients with an ongoing dedication to provide professionally trained, experienced, and detail-oriented project management experts.

ECM has vast experience in **public affordable housing.**



Blue Flame High-Rise Building

The building rehabilitation project was an adaptive reuse project for the Housing Authority of the City of El Paso that reprogrammed the building to a mix-use project. The eighteen-story building offers 120 affordable and market-rate apartments, commercial and office lease spaces, and an observatory at the rooftop level that will be open to the general public.



Gonzalez Apartments Complex

ECM was involved in the design and construction phase and tasked with coordinating all utility companies, including the oversight of all easement agreements, design progress, review and approval process, construction coordination with the general contractor, subcontractors, utility companies, and service requests and connections.



Sun Plaza High-Rise and Cottages

The rehabilitation project consisted of a nine-story high-rise building with 208 units and 22 cottages with 122 units. The units offer different bedroom options, 17 of them being 1-bedroom ADA accessible. The building caters specifically to the elderly population. It offers amenities to suit their needs, such as bi-monthly health checks with a internal clinic operation area, several activity classes, and transportation to the local stores.



Haymon Krupp Community

The Haymon Krupp Community is a 96-unit, multifamily housing community divided into 12 two-story buildings with two, three, and four-bedroom units. The reconstruction project of the Krupp Community began with a complete demolition and received a new community layout that enabled a more walkable and safer community.



Tays North Community

The community received a complete renovation through RAD Program equipping each unit with energy-efficient appliances, windows, lighting, central air, and cabinetry along with all new water, gas, and electrical systems. The community has 56 buildings with one and two-story that offer one to four-bedroom options with 15 units having ADA compliant standards. ECM provided project and construction management services.

Our success stems from owner involvement, experienced employees, proactive processes, and team building.



Featured Housing Project



Rental Assistance Demonstration (RAD) Housing Program

The Housing Opportunity Management Enterprises (HOME), formerly Housing Authority for the City of El Paso, or HACEP, is largest public housing authority in Texas and the 14th largest in the United States, serving 40,000 low-income families. With the RAD Program, HOME is renovating or rebuilding substantially all of its portfolio of about 6,000 public housing units in a program.

Since 2015, ECM has been the Owner’s Representative on HOME’s \$1.2 billion RAD program effort. ECM has closely collaborated with HOME staff, design architects, developers, and contractors to complete more than 30 communities and over 1,000 individual buildings for a total of 4 million SF to date. These buildings include one, two, and three-level buildings and five high-rise buildings.

ECM’s program-wide project management services include establishing minimum standards for project execution, implementing industry-wide processes and procedures, and providing oversight of both developer and contractor activities related to safety, quality, and progress. ECM also reviews and validates construction estimates, design drawings and specifications, construction schedules, and construction contracts.

Ready to Talk? Let us know.

El Paso Office:

Mel Herrera, PE, PMP, LEED-AP
Senior Vice President
(915) 490-8177
mherrera@jmt.com

Austin Office:

Terry Whitman
Director of Operations, Central TX
(214) 693-3567
twhitman@jmt.com

Jaime Gallo, PE, CCM
Vice President, Transportation
(915) 474-8673
jgallo@jmt.com

404 Executive Center Blvd. El Paso, TX 79902 | (915) 351-1900
2211 S IH35, Suite 200 Austin, TX 78741 | (512) 667-7269